



**NCE**

North Central  
Engineering

Since 1970, North Central Engineering, Inc. has been committed to providing our customers with the very best instrumentation available for use in their testing, measurement, automation, and process control applications. We have aligned ourselves with cutting edge industry leading manufacturers that are recognized for their superior performance, reliability, and quality to ensure that we are providing you with the most technologically advanced products available in the field today. Let our nearly fifty years of engineering experience, service, and ongoing support help you solve tomorrow's challenges today.

We are pleased to represent the following manufacturers and services:



ISO 17025 Accredited  
flow meter calibration  
and repair service



Filter assemblies and  
replacement filter elements



Air regulators, proportional  
valves, volume boosters,  
air relays and friction-free  
diaphragm cylinders



Data acquisition hardware and  
software interface systems



Turbine, magnetic, ultrasonic  
and high-shock flow meters



Pressure transducers



High pressure valves, fittings,  
adapters and tubing



Air-driven liquid pumps, gas  
boosters and air amplifiers



Flow meters, flow switches,  
level controls, safety excess  
flow valves, flow controllers,  
relief valves and pressure  
sensors



Positive displacement piston,  
gear and helical style liquid  
flow meters



Sliding gate, ball sector and  
angle style control valves



High pressure hose, valves,  
fittings and tubing



Precision pressure regulators,  
pressure controllers and  
systems for liquids, gases  
and hydraulic service



Coriolis mass flow meters



Thermal mass flow meters  
and controllers for gases

North Central Engineering represents and distributes products for the automation, testing, instrumentation, process control and power production markets.

**max**

Precision Flow Meters

**Max Machinery, Inc.**

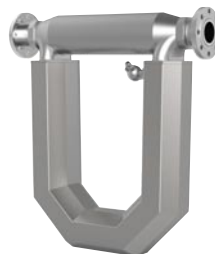
Positive displacement piston, gear and helical style liquid flow meters. Accuracies of  $\pm 0.2\%$  of reading in flow ranges of 0.005 cc/min. to 132 GPM.



**TRICOR**  
Coriolis Technology

**Tricor**

Coriolis mass flow meters. Accuracies of  $\pm 0.1\%$  of reading for liquid flow ranges of 75 cc/min. to 1,012 GPM and gas flow ranges of 2 SCFM to 7,300 SCFM.



**NCE**  
North Central  
Engineering





### Flow Technology, Inc.

Turbine, magnetic, ultrasonic and high-shock flow meters for liquids up to 18,779 GPM and gases up to 1,500 ACFM in accuracies of up to  $\pm 0.1\%$ .



### Vogtlin Massflow

Thermal mass flow meters and controllers for gases. Flow ranges from 0.001SCFM to 17 SCFM in accuracies up to  $\pm 0.5\%$  of reading.



### Tescom Corp.

Precision pressure regulators and digital pressure controllers for liquid, gas and hydraulic service from vacuum up to 20,000 PSIG. Pressure transducers and gauges in various outputs, accuracies and connections.







### **Control Air, Inc.**

Air regulators, I/P and E/P transducers, volume boosters, air relays and friction-free diaphragm cylinders.



### **Malema Sensors**

Coriolis, vortex, paddle wheel, variable area, thermal mass, ultrasonic and magnetic flow meters. Flow switches, level controls, relief valves, safety excess flow valves, flow controllers and pressure sensors.



### **Schubert & Salzer, Inc.**

Sliding gate, ball sector and angle style control valves for use in liquid, gas and steam service.



### **High Pressure Equipment Co.**

High pressure valves, fittings, adapters and tubing for pressures from 10,000 PSI to 150,000 PSI. Reactors, pressure vessels and pressure gauges.





### **Spir Star**

High pressure hose with working pressures to 46,400 PSI for use in automotive, hydraulic, pneumatic, petrochemical and water blasting applications.



### **Hydraulics International, Inc.**

Air-driven liquid pumps, gas boosters, air amplifiers, gas receivers, plenum chambers and valves.



### **GP:50**

Pressure transducers and transmitters for industrial, testing, process control and water treatment. Pressure ranges from vacuum to 150,000 PSI offered in various accuracy and signal output options.



### **DeweSoft**

Data acquisition systems and software for use in test cell, laboratory and on-board sensor measurement and analysis applications.





### Chase Filters & Components

Tee-type, spin-on and in-line filters for both hydraulic and pneumatic applications. Replacement filter elements available for all leading filter manufacturers.



## CAL-CORR

### SERVICES & REPAIRS

### Flow Meter Calibration & Repair Service

Your flow meter is only as accurate as the method of calibration you choose. Why compromise accuracy with unqualified, non-traceable calibrations?

**CAL-CORR SERVICES & REPAIRS** is an ISO/IEC 17025 accredited laboratory that specializes in the calibration and repair of liquid and gas flow meters.

We use N.I.S.T. traceable, primary standard calibration systems to provide you with the most accurate and reliable calibration data for your flow measurement device. In addition, we offer calibrations done in special fluids, Universal Viscosity Curve (UVC) calibrations, and on-site correlations of flow measurement equipment.

We calibrate a variety of flow meters including:

- ( ) Turbine
- ( ) Positive Displacement
- ( ) Coriolis

- ( ) Magnetic
- ( ) Mass Flow Meters
- ( ) Rotometers
- ( ) Vortex
- ( ) Variable Area

Liquid Calibration Flow Range:  
.0003 to 400 GPM  
Gas/Air Calibration Flow Range:  
0.1 to 30 ACFM

We'd be pleased to assist you with your flow calibration needs. Call us at:  
(800) 728-9903  
Or, send an email to:  
[calcorrservices@nceng.com](mailto:calcorrservices@nceng.com).  
You can also visit our website at:  
[www.nceng.com](http://www.nceng.com).

[Member of the National Conference of Standards Laboratories]







25540 Pennsylvania Road Taylor, Michigan 48180  
tel: 800 | 728-9903 734 | 942-0900 fax: 734 | 942-7678 web: [nceng.com](http://nceng.com)